

# Installation & Wiring Instructions

## OLP/2 - High Output Bulkhead

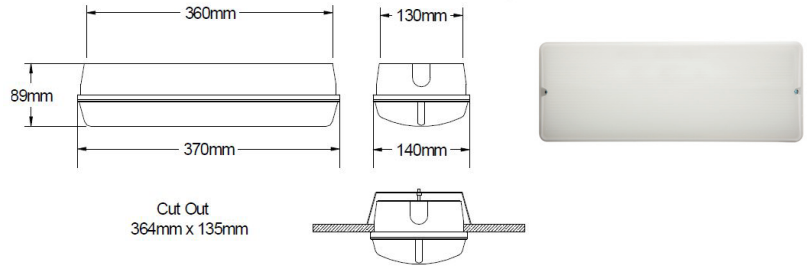
**PLEASE READ** THESE INSTRUCTIONS BEFORE COMMENCING INSTALLATION & LEAVE WITH END USER

### Description:

The OLP/2 bulkhead is a robust IP65 luminaire which offers 1,163 lumen in mains operation and 842 lumen emergency operation.

The OLP/2 is manufactured with an opal diffuser which casts the light well over a wide arc. The Makralon diffuser offers a high light output ratio (LOR) maximising the light from the LED chips. LDT files in both mains and emergency operation are available, please contact the Liteplan sales office who will be happy to send them to you.

The LiteMesh wireless version should be wired in the same way as basic the emergency version. Communiation will be established during the commisioning process.



### Specification:

Input Voltage	230-240 Volts AC 50/60 Hz
Power Rating Non-Maintained *	3.6W 19.8mA $\lambda = 0.77$
Power Rating Maintained	12.4W 71mA $\lambda = 0.73$
Ambient Temp.	0°C to + 25°C
Mains Input Terminal	0.5mm - 2.5mm
Battery Fuse	Internal to NLP/2
Battery Discharge Current	900mA
Discharge Voltage Limit	5.0V
Ingress Protection	IP65
Battery Pack	6.4V 4.8Ah LiFePO4
Charge Current	225mA Nominal
Recharge Period	24-Hours
Width and Length	370mm 140mm
Depth	89mm
Side Cable Entry	20mm Knock Outs L&R
Rear Cable Entry	20mm Knock Out Centre
Overall Weight (maintained)	1.8Kg

\* Following its initial charge the OLP/2 will spend 90% of its operational life in standby mode

### Product codes

**OLP/2/NM**  
**OLP/2/M**  
**OLP/2/NM/LMEM**  
**OLP/2/M/LMEM**

**Non-maintained Bulkhead**  
**Maintained Bulkhead**  
**Non-maintained Wireless Bulkhead**  
**Maintained Wireless Bulkhead**

### Important

It is recommended that this product is installed by a competent person in accordance with the current building and wiring regulations. Liteplan accept no responsibility for injury, damage or loss, which may arise as a result of incorrect installation, operation or maintenance.

The product requires an un-switched supply for charging the battery and a switched supply for maintained operation.

**ISOLATE MAINS SUPPLIES AND DISCONNECT THE BATTERY BEFORE INSTALLATION OR MAINTENANCE.**

#### Installation:

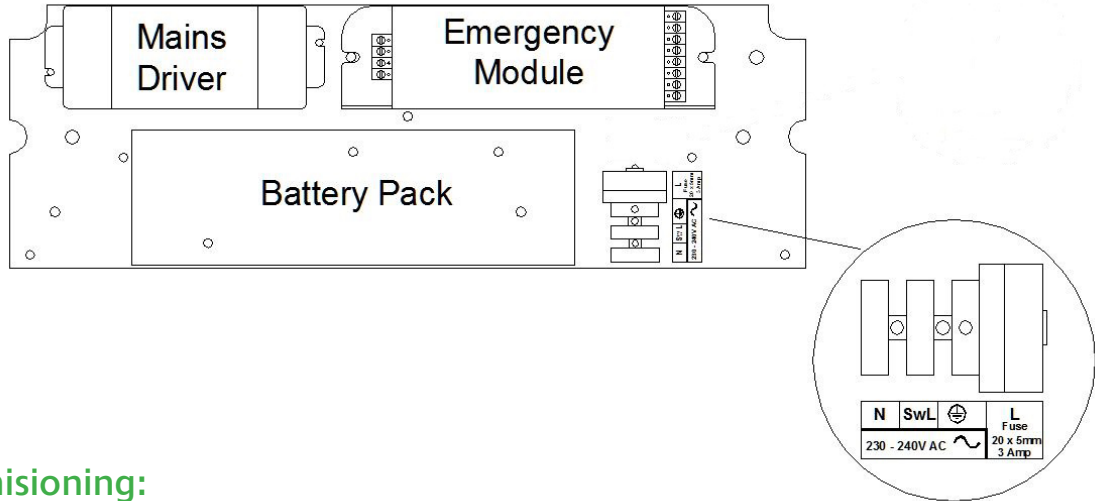
1. Remove the two front screws and lift off diffuser.
2. Remove the two screws on the hinged geartray and lift to reveal the components underneath.
3. Open your desired cable entry and feed mains cable through. Use the required IP rated gland to ensure that IP rating is maintained.
4. Connect the cables to the terminal block as shown in the diagram overleaf.
5. For Non-Maintained operation, do not connect to the Switched Live terminal.
6. Connect the battery.
7. Screw the geartray back into position ensuring no cables are trapped.
7. Refit the cover.
8. Fit the screws back into the diffiser making a water tight seal.

# Installation & Wiring Instructions

## OLP/2 - High Output Bulkhead

**PLEASE READ** THESE INSTRUCTIONS BEFORE COMMENCING INSTALLATION & LEAVE WITH END USER

Typical Wiring Diagram



### Testing/Commissioning:

- Ensure the power is connected.
- Connect the battery.
- Switch on the Un-switched Supply - Check the Charge LED illuminates.
- Switch off the Un-switched Supply - Check the Charge LED extinguishes and the load LED illuminates.
- Enter the commissioning date on the Battery Pack.
- Switch on the Un-switched Supply

Luminaire Ref/Location			In case of difficulty, contact the Installation Engineers:- Tel: _____							
Full Recharge Time 24 Hours			Duration 3 Hours				Lamp Type - LED			
ROUTINE TEST RECORD										
	Year 1		Year 2		Year 3		Year 4		Year 5	
Monthly Test	Signed	Date	Signed	Date	Signed	Date	Signed	Date	Signed	Date
Functional										
Functional										
Functional										
Functional										
Functional										
Functional										
Functional										
Functional										
Functional										
Functional										
Three Hour										