

Installation & Wiring Instructions

CE55 Range

IP65 Wall Mounted Exit Sign

PLEASE READ THESE INSTRUCTIONS BEFORE COMMENCING INSTALLATION & LEAVE WITH END USER

Description:

The CE55 is a standalone maintained/non-maintained emergency fitting designed as a discrete and simple IP65 emergency light source. The battery is a 3.2V 3.8Ah lithium iron phosphate (LiFePO₄).

The fitting is supplied with a kit of legends to ease installation.

The CE55/DA operates the DALI-2 protocol.

The unit will recharge the batteries after the test of clause 22.3 of BS EN 61347-2-7:2012.

Specification:

Input Voltage	230-240 Volts AC 50/60 Hz
Basic Power Charging *	5.7W 31mA $\lambda = 0.75$
Basic Power Charged *	0.2W 8mA $\lambda = 0.1$
DALI Power Charging *	5W 28mA $\lambda = 0.74$
DALI Power Charged *	0.3W 8mA $\lambda = 0.15$
Duration	3 hours
Ambient Temp.	0°C to + 25°C
Max Case Temperature	50°C
Max Battery Temperature	55°C
Battery Fuse	Internal
Discharge Current	900mA Nominal
Discharge Voltage Cut-off	2.5V
Ingress Protection	IP65
Battery Pack	3.2V 3.8Ah LiFePO ₄
Charge Current	225mA Nominal
Recharge Period	24 Hours
Overall Weight (Basic)	0.54Kg
Overall Weight (DALI)	0.56Kg

* LiFePO₄ control gear will initially charge the battery and then spend 90% of its operational life in a 'Charged' or standby state.



Level of Operation

CE55/M	Basic Maintained/Non-maintained
CE55/DA	DALI-2 Self-test Maintained/Non-maintained
CE55/LMEM	Wireless Self-Test Maintained/Non-maintained

Important

It is recommended that the unit is installed by a competent person ensuring the installation complies with the necessary standards. Liteplan accept no responsibility for injury, damage or loss, which may arise as a result of incorrect installation, operation or maintenance.

The product requires an un-switched supply for charging the battery..

ISOLATE MAINS SUPPLY AND DISCONNECT THE BATTERY BEFORE INSTALLATION OR MAINTENANCE.

Installation:

1. Open the cover of the CE55 using a small terminal driver.
2. Open the hinged geartray of the CE55 with a small terminal driver.
3. Connect the mains supplies to the terminal block, ensuring that the cable restraint is used.
4. If the fitting is to be used in maintained mode, please connect the un-switched (L1), the switched (L), and the neutral (N) cables. If being used in non-maintained mode, please ignore the switched terminal.
5. If DALI feedback is required, please connect the DALI bus to the two DALI terminals. (CB55/DA only)
6. Close the geartray and click it into place.
7. Replace the cover, clicking it into place in all four corners to ensure IP rating.
8. Apply the exit legend, carefully choosing the arrow configuration.
9. See Testing and Commissioning section.

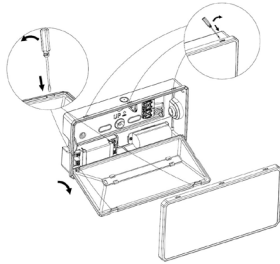
Installation & Wiring Instructions

CE5S Range

IP65 Wall Mounted Exit Sign

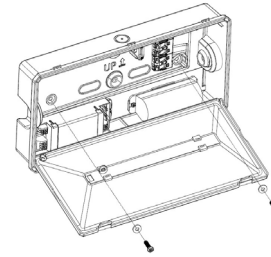
PLEASE READ THESE INSTRUCTIONS BEFORE COMMENCING INSTALLATION & LEAVE WITH END USER

Figure one



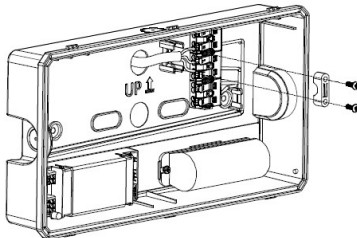
1 - Using a terminal driver, open the cover, unclipping at all six points and remove it. With the same driver, unclip the geartray and swing it open at the hinge.

Figure two



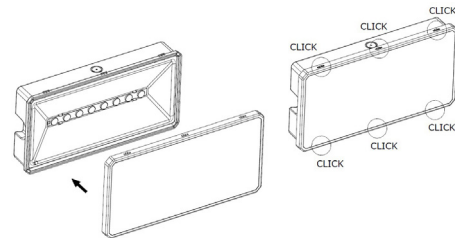
2 - Using one of the various fixing points, install the luminaire in its desired position, with the supply cables coming into the luminaire.

Figure three



3 - Connect the supplies and, where required DALI bus. Once power is assured, connect the battery connector. Ensure that the cable clamp is tightened.

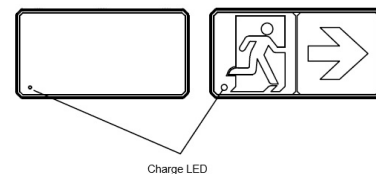
Figure four



4 - Return and click the geartray to its operational position. Replace the cover, making sure there is a click at all six points to maintain IP rating.

5 - Stick adhesive exit legend to the front face of the CE5S with the required arrow direction on the right hand side. Please ensure the position of the charge LED is not covered (see Figure five).

Figure five



CE5S/DA Device Status Indicator:

Green Solid	Battery connected & charging	Red Solid	Emergency LED Fault
Green Fast Flash 0.1 sec On, 0.1 sec Off	Function Test in progress	Red Fast Flash 0.1 sec On, 0.1 sec Off	LED Driver Fault
Green Slow Flash 1.0 sec On, 1.0 sec Off	Duration Test in progress	Red Slow Flash 1.0 sec On, 1.0 sec Off	Battery Fault
Green Very Slow Flash 4.0 sec On, 1.0 sec Off	Automatic Duration Test Passed in last 7 days	Red & Green Off	In Emergency Mode

Testing/Commissioning:

- Ensure all connections are made, including the battery.
- Switch on the un-switched supply (L1) - Check the charge LED illuminates.
- Switch on the switched supply (L) - Check the central load LED illuminates (maintained units only)
- Switch off the un-switched supply - Check the charge LED extinguishes and the central load LED illuminates.
- Switch on the un-switched supply.